

Mary
Pichette

Biography

I grew up in Long Beach, California and graduated from UCLA with a BA in Fine Arts. For two years I worked in aircraft art departments. I then trained in medical technology and worked in that capacity for twenty-nine years. Years later, I saw the Impressionist Exhibit “A Day in the Country” at LACMA. I was inspired to start creating art again.

Shadow Abstracts



Shadow Abstract #1

43" x 64"



The Enchanted Forest

42" x 42"



March Shadow Abstract

30½" x 42"



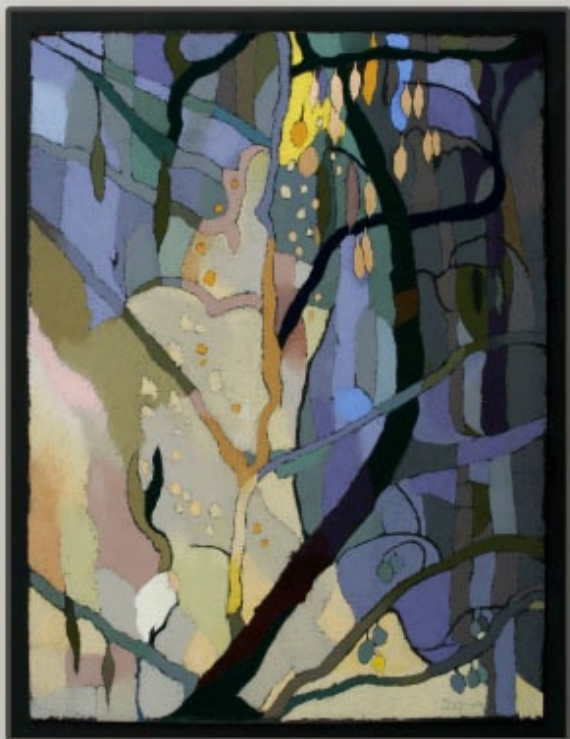
September Shadows

31½" x 43"

Shadow Abstract #30
47" x 38"



Winter Shadow Abstract
47" x 37½"





January Shadow Abstract

27½" x 37"



Midnight Shadows

43½" x 64"



Remembering Blackie

43½" x 64"



Blackie in Shadowland

36" x 40½"



Shadows of Gold

25" x 60"

Mary
Pichette

22213 Moneta Ave. Carson, CA 90745-2844

310-618-9882 pichettemary@yahoo.com

To Review Files
Depress Esc Key
on Your Keyboard